

XC-300 Anatomical Series



▲ XC-303A Giant Ear Model

This model shows three main structural parts of the hearing organ (external ear, middle ear, internal ear) and the position of the equilibrium organ of human body. 5 times enlarged. Size: 42x24x16CM

XC-303A dissectible into 4 parts.

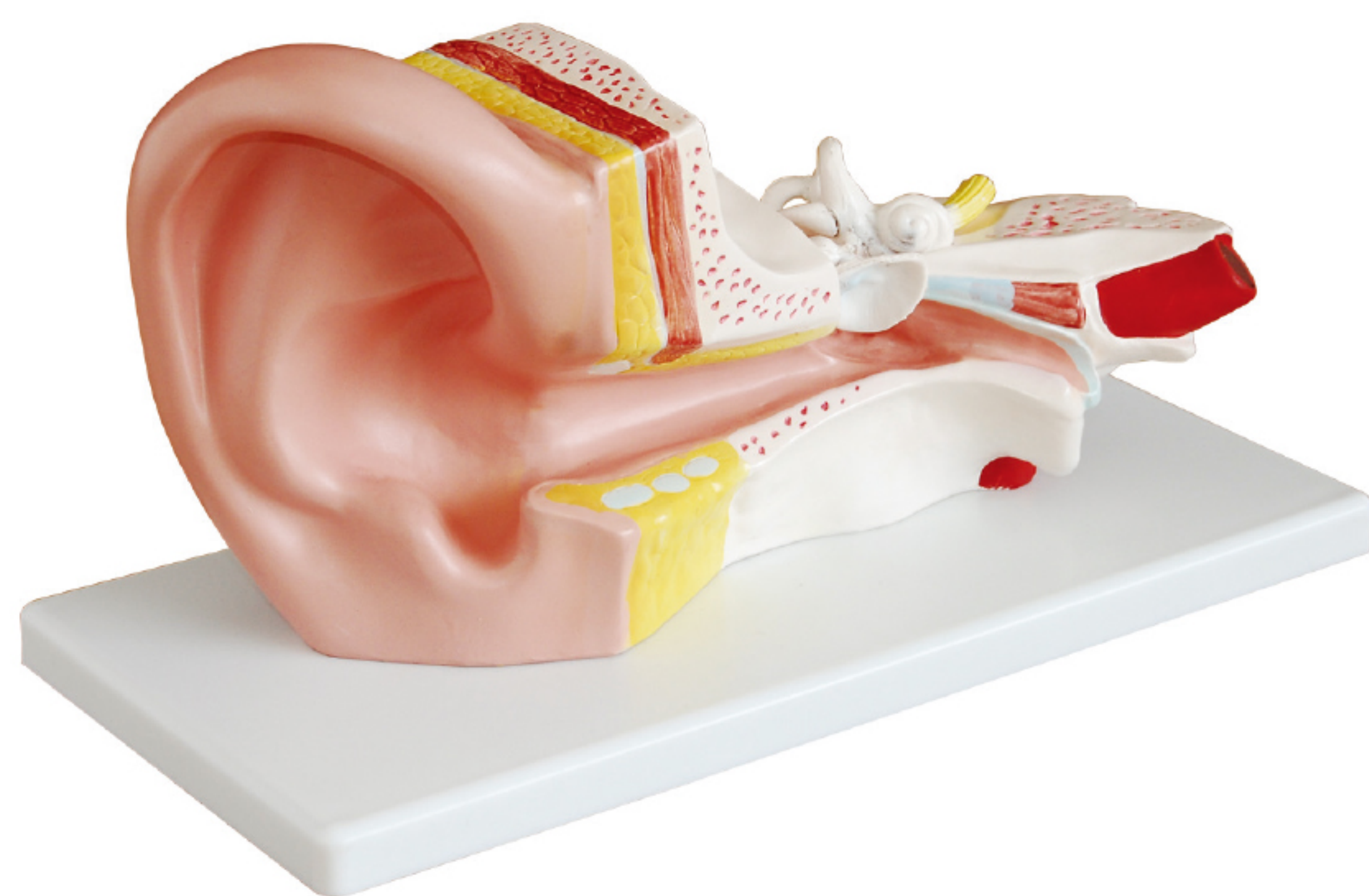
XC-303C dissectible into 6 parts.

XC-303A Packing: 6pcs/carton, 56x48x55cm, 15kgs

XC-303C Packing: 6pcs/carton, 55x47x59cm, 15kgs



▲ XC-303C New Style Giant Ear Model



◀ XC-303B Middle Ear Model

This model shows all major structures related to hearing and balance. Dissectible into 2 parts, 3 times enlarged. Mounted on plastic base.

Size: 32x16x11CM.

Packing: 10pcs/carton, 73x32x42cm, 11kgs

▶ XC-303D Desktop Ear Model

Representation of the outer, middle, and inner ear. 1.5 times enlarged. On stand.

Packing: 32pcs/carton, 53x30x41m, 20kgs

